

D

D

**Material and Finish Codes**

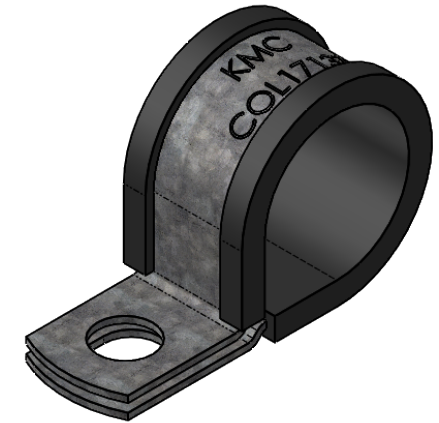
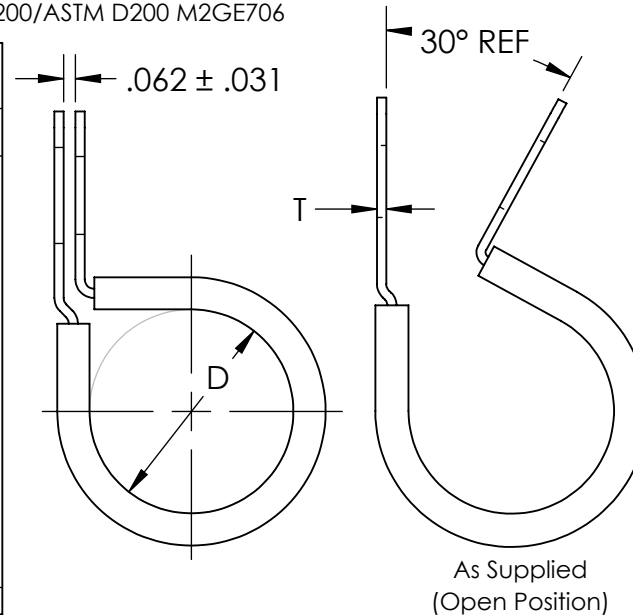
Z1 - CS, HD Galvanized, Chem Treated G90  
 SS - Stainless Steel, Per ASTM A240/A666  
 AL - 5052 H34 per ASTM B209

**Cushion**

EPDM per SAE J200/ASTM BC715A14C12E034  
 or  
 Silicone per AMS3304, SAE J200/ASTM D200 M2GE706

**Center to Center  
(L)**

aa from 03 to 05		aa from 06 to 08	aa from 09 to 31	aa from 32 to 64
COL-0307	.916	$\frac{aa + bb + 3}{32}$	$\frac{aa + bb + 6}{32}$	$\frac{aa + bb + 7}{32}$
COL-0309	.854			
COL-0311	.791			
COL-0313	.729			
COL-0407	.711			
COL-0409	.674			
COL-0411	.611			
COL-0413	.656			
COL-0415	.718			
COL-0417	.781			
COL-0507	.569			
COL-0509	.562			
COL-0511	.625			
COL-0513	.687			
COL-0515	.750			
COL-0517	.812			
± .031				



Note: COL clamps have a circular hole with diameter H on the top side and a slotted hole with H width, and length S, on the bottom side.

KMC and Part Number Stamped in Metal

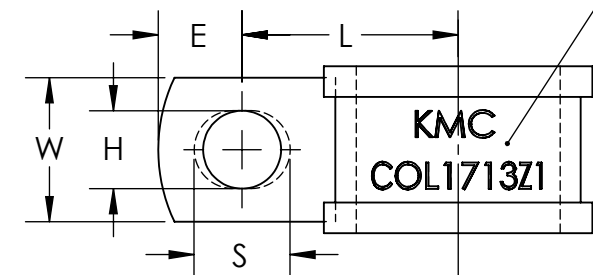
C

C

B

B

	Hole Diameter (H)	Hole Center to End (E)	Slot Length (S)	Width (W)	HD Galvanized Thickness (T)			Stainless Thickness (T)	
					aa from 03 to 06	aa from 07 to 64	aa from 17 to 64	aa from 03 to 16	aa from 17 to 64
07	.203	.250	.297	.500	.032	.032	N/A	.032	.048
09	.281	.312	.375			.048	.048		
11	.343	.375	.437	.750					
13	.406	.437	.500						
15	.468	.500	.562						
17	.531	.562	.625	1.000					
	± .005	± .015	± .020	± .010	± .002			± .002	



A

A

**EXPLANATION OF PART CALLOUT**

COL - aa bb mf

MATERIAL AND FINISH CODE  
 SECONDARY DIMENSIONS CODE  
 CLAMPING DIAMETER CODE  
 PART SERIES

**EXAMPLE OF PART CALLOUT**

COL - 17 13 Z1

This part number indicates the clamp will have dimensions:

Clamping Diameter (D) = 1.062  
 Center to Center (L) = 1.125  
 Hole Center to End (E) = .437  
 Slot Length (S) = .500

Hole Diameter (H) = .406  
 Width (W) = .750  
 Material Thickness (G) = .048

Made from CS, Hot Dipped Galvanized,  
 Chem Treated G90

**KMC**  
 THE ORIGINAL CLIP & CLAMP CO.

1221 SOUTH PARK STREET  
 PORT WASHINGTON, WI 53074  
 (262) 377-5030

**PROPRIETARY AND CONFIDENTIAL**

THE INFORMATION CONTAINED IN THIS DRAWING IS THE SOLE PROPERTY OF KICKHAERER MANUFACTURING COMPANY. ANY REPRODUCTION IN PART OR AS A WHOLE WITHOUT THE WRITTEN PERMISSION OF KICKHAERER MANUFACTURING COMPANY IS PROHIBITED.

**PART SERIES  
MASTER PRINT****COL**

WIRING AND TUBE  
 CLAMPS, WITH LINER

DRAWN CHECKED

BC KW

8/22/17 9/11/18

NOT TO SCALE