

5

4

3

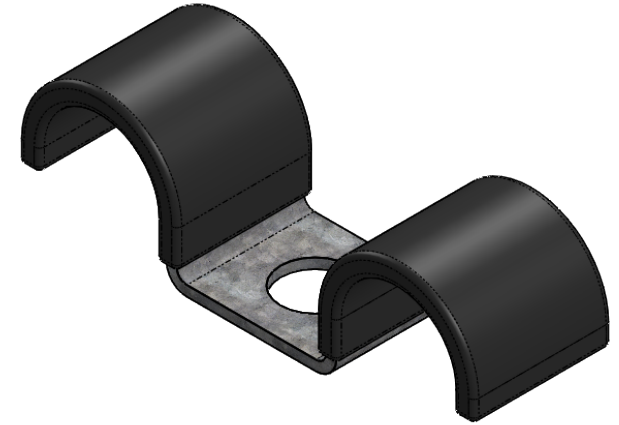
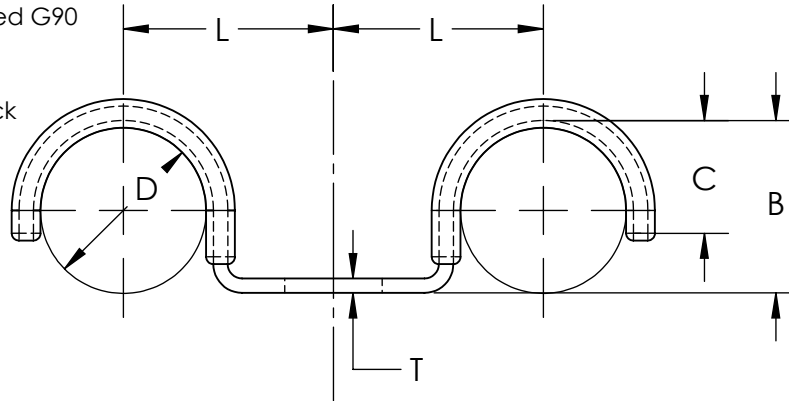
2

1

**Material and Finish Codes**

Z1 - CS, HD Galvanized, Chem Treated G90  
 Z2 - CS, .0002 min Zinc, Clear

Cushion is Black Vinyl, 1/32" Thick



C

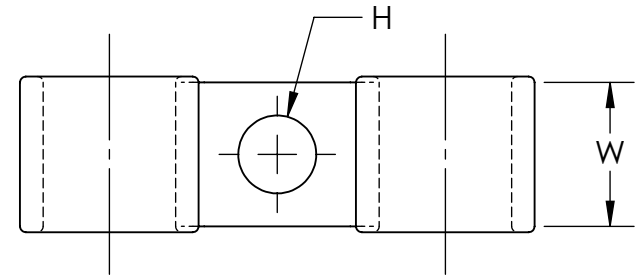
B

A

Part Number	Clamping Diameter (D)	Center to Center (L)	Width (W)	Hole Diameter (H)	Base to Top of Radius (B)	Closure (C)	Material Thickness (T)		
CMV-0609	.312	.625	.187	.281	.343	.281	.048		
CMV-0611				.343					
CMV-0709	.375	.687	.750	.281	.375	.343			
CMV-0711				.343					
CMV-0809	.437	.812		.281	.437	.250			
CMV-0811				.343					
CMV-0909	.500	.875		.281	.468	.400			
CMV-0911				.343					
CMV-1009	.562	.625		.281	.625	.500	.060		
CMV-1011				.343					
CMV-1109	.625			1.000		.281			.437
CMV-1209*	.687			.875		.281			
CMV-1211*		.343							
CMV-1213*		.406							
CMV-1311*	.750	1.250	1.000	.343	.406	.090**			
CMV-1313*				.406					
CMV-1409*	.812	.906	.750	.281	.843			.687	
CMV-1413*				.406					
CMV-1609*	.937	1.062		.281	.906		.750		
CMV-1713*	1.000	1.156		1.000	.406	.968	.968	.120	
	± .031	± .031	± .010	± .005	± .015	REF.	± .002		

\*Part only available in Z2

\*\*Material Thickness tolerance of ± .004



**KMC**  
 THE ORIGINAL CLIP & CLAMP CO.

1221 SOUTH PARK STREET  
 PORT WASHINGTON, WI 53074  
 (262) 377-5030

**PROPRIETARY AND CONFIDENTIAL**

THE INFORMATION CONTAINED IN THIS DRAWING IS THE SOLE PROPERTY OF KICKHAEFER MANUFACTURING COMPANY. ANY REPRODUCTION IN PART OR AS A WHOLE WITHOUT THE WRITTEN PERMISSION OF KICKHAEFER MANUFACTURING COMPANY IS PROHIBITED.

**PART SERIES MASTER PRINT****CMV**

COATED DOUBLE  
 PIPE CLAMPS

DRAWN

CHECKED

BC

KW

8/22/17

11/28/18

NOT TO SCALE

5

4

3

2

1