

5

4

3

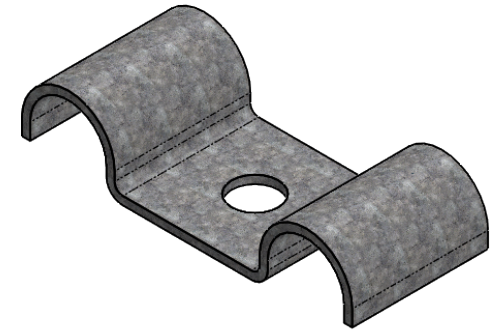
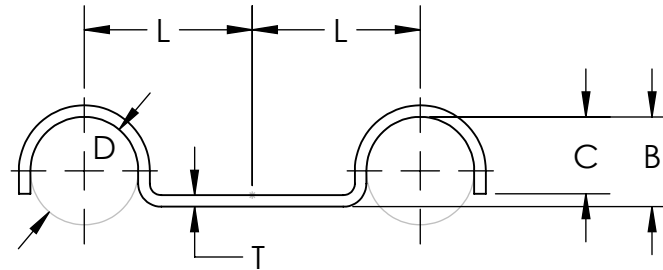
2

1

**Material and Finish Codes**

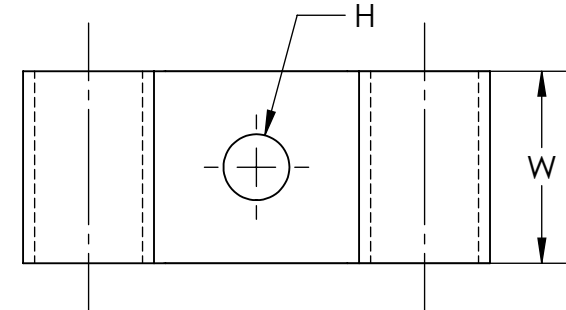
Z1 - CS, HD Galvanized, Chem Treated G90

Z2 - CS, .0002 min Zinc, Clear



Part Number	Clamping Diameter (D)	Center to Center (L)	Width (W)	Hole Diameter (H)	Base to Top of Radius (B)	Closure (C)	Material Thickness (T)
CM-0307	.187	.437	.500	.218	.156	.093	.048
CM-0309				.281			
CM-0407	.250			.218	.093		
CM-0409				.281			
CM-0507	.312	.531	.625	.218	.296	.265	
CM-0509		.281					
CM-0609	.375	.625		.281	.343	.281	
CM-0611				.343			
CM-0709	.437	.687	.750	.281	.375	.343	
CM-0711				.343			
CM-0809	.500	.812		.281	.437	.250	
CM-0811				.343			
CM-0909	.562	.875		.281	.468	.400	
CM-0911				.343			
CM-1009	.625	.625		.281	.625	.500	
CM-1011				.343			.437
CM-1109	.687			1.000		.281	
CM-1209*	.750			.875		.750	.343
CM-1211*		.406					
CM-1213*		.343					
CM-1311*	.812	1.250	1.000	.406	.406	.090**	
CM-1313*				.406			
CM-1409*	.875	.906	.750	.281	.843		.687
CM-1413*				.406			
CM-1609*	1.000	1.062		.281	.906		.750
CM-1713*	1.062	1.156	1.000	.406	.968	.968	.120
	± .015	± .031	± .010	± .005	± .015	REF.	± .002

\*Parts only available in Z2 \*\*Material Thickness tolerance of ± .004

**KMC**

THE ORIGINAL CLIP &amp; CLAMP CO.

1221 SOUTH PARK STREET  
PORT WASHINGTON, WI 53074  
(262) 377-5030**PROPRIETARY AND CONFIDENTIAL**THE INFORMATION CONTAINED IN THIS  
DRAWING IS THE SOLE PROPERTY OF  
KICKHAEFER MANUFACTURING COMPANY. ANY  
REPRODUCTION IN PART OR AS A WHOLE  
WITHOUT THE WRITTEN PERMISSION OF  
KICKHAEFER MANUFACTURING COMPANY IS  
PROHIBITED.PART SERIES  
MASTER PRINT**CM**

DOUBLE PIPE CLAMPS

DRAWN

CHECKED

BC

KW

8/22/17

9/11/18

NOT TO SCALE

5

4

3

2

1

D

D

C

C

B

B

A

A