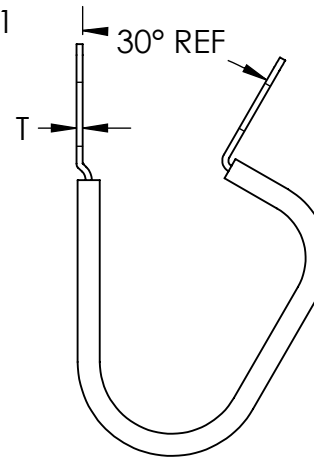
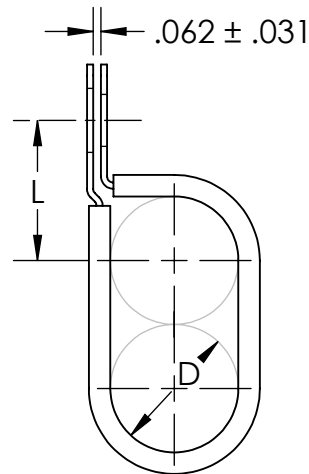


### Material and Finish Codes

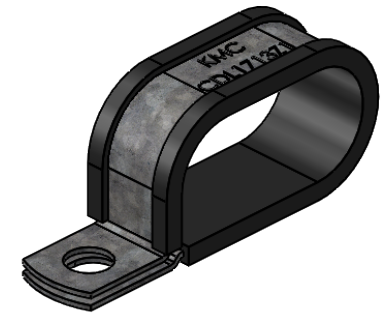
Z1 - CS, HD Galvanized, Chem Treated G90  
SS - Stainless Steel, Per ASTM A240/A666

### Cushion

EPDM per SAE J200/ASTM BC715A14C12E034  
or  
Silicone per AMS3304, SAE J200/ASTM D200 M2GE706



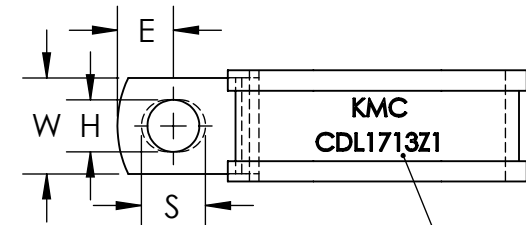
As Supplied  
(Open Position)



Note: CDL clamps have a circular hole with diameter H on the top side and a slotted hole with H width, and length S, on the bottom side.

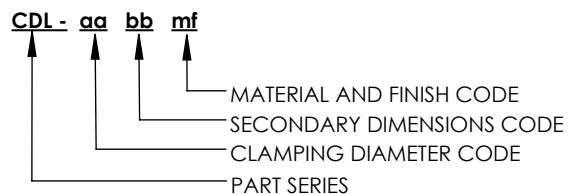
Clamping Diameter (D)	Center to Center (L)
$\frac{aa}{16}$	$\frac{aa + bb + 7}{32}$
± .031	± .031

bb	Hole Diameter (H)	Hole Center to End (E)	Width (W)	Slot Length (S)	HD Galv Thickness (T)			Stainless Thickness (T)	
					aa from 04 to 07	aa from 08 to 16	aa from 17 to 24	aa from 04 to 07	aa from 08 to 24
07	.203	.250	.500	.297	.032	.032	.048	.032	.048
09	.281	.312		.375					
11	.343	.375	.625	.437					
13	.406	.437	.750	.500					
15	.468	.500		.562					
17	.531	.562	1.000	.625					
	± .005	± .015	± .010	± .020	± .002			± .002	



KMC and Part Number  
Stamped in Metal

### EXPLANATION OF PART CALLOUT



### EXAMPLE OF PART CALLOUT

#### CDL - 17 13 Z1

This part number indicates the clamp will have dimensions:  
Clamping Diameter (D) = 1.062  
Hole Diameter (H) = .406  
Center to Center (L) = 1.125  
Width (W) = .750  
Hole Center to End (E) = .437  
Material Thickness (G) = .048  
Slot Length (S) = .500

Made from CS, Hot Dipped Galvanized,  
Chem Treated G90

**KMC**  
THE ORIGINAL CLIP & CLAMP CO.

1221 SOUTH PARK STREET  
PORT WASHINGTON, WI 53074  
(262) 377-5030

#### PROPRIETARY AND CONFIDENTIAL

THE INFORMATION CONTAINED IN THIS  
DRAWING IS THE SOLE PROPERTY OF  
KICKHAEFER MANUFACTURING COMPANY. ANY  
REPRODUCTION IN PART OR AS A WHOLE  
WITHOUT THE WRITTEN PERMISSION OF  
KICKHAEFER MANUFACTURING COMPANY IS  
PROHIBITED.

### PART SERIES MASTER PRINT

#### CDL

DOUBLE TUBE CLAMPS,  
WITH LINER

DRAWN CHECKED

BC KW

8/22/17 9/11/18

NOT TO SCALE